



HZE_Air treatment units

- └ Modern design
- └ Modularity
- └ Easy assembly
- └ HZE0: G1/4" (40 mm)
HZE1: G3/8" (63 mm)
HZE2: G1/2" (80 mm)

HZE

Air treatment units



Integrated pressure gauge standard supplied



Threaded square adaptor for round pressure gauge standard supplied (optional for size 0)



Gradual starter



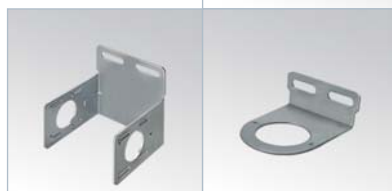
Shut-off valve



Lockable valve



Diverter block



Fixing accessories



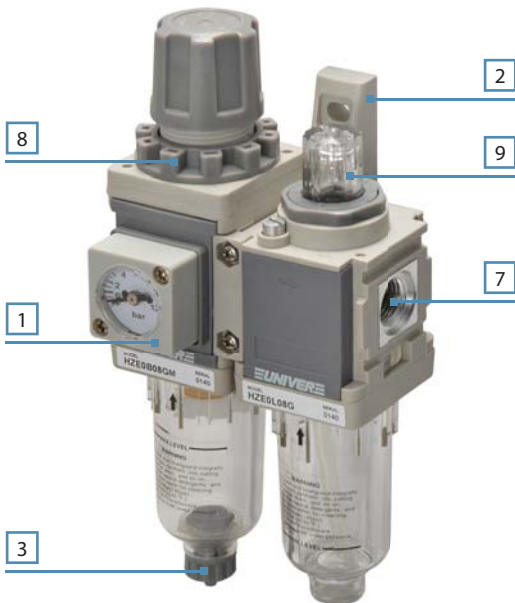
manual/semi-auto exhaust



automatic exhaust

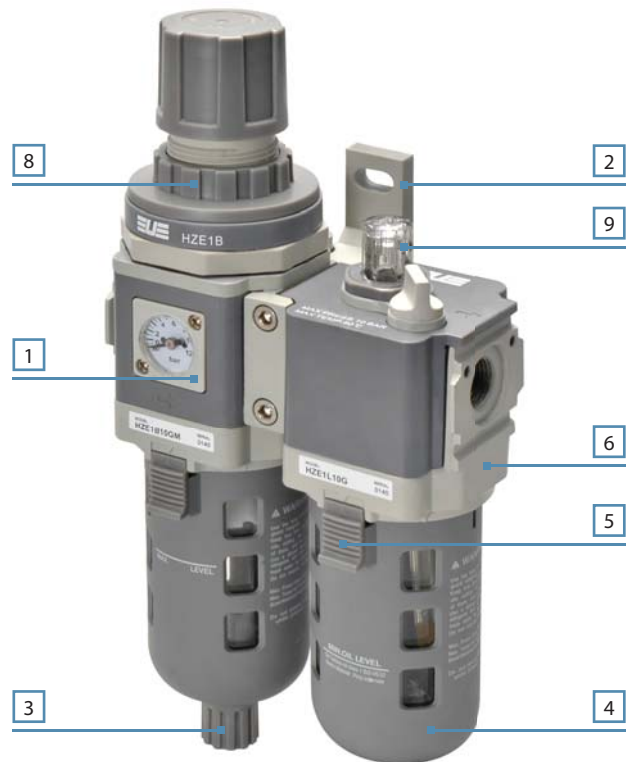
_size 0

- 1_ Integrated pressure gauge standard supplied
- 2_ T-bracket for wall mounting
- 3_ Manual exhaust
- 7_ Metal thread
- 8_ Panel ring nut standard supplied
- 9_ Transparent dome and integrated regulation



_size 1 - 2

- 1_ Integrated pressure gauge standard supplied
- 2_ T-bracket for wall mounting
- 3_ Manual exhaust
- 4_ Bowl with guard standard supplied
- 5_ Safety locking device
- 6_ Metal body
- 8_ Panel ring nut standard supplied
- 9_ Transparent dome and integrated regulation



TYPE	SIZE	POSITION	PRESSURE ADJUSTMENT		LOCKABLE REGULATOR	FILTRATION RATING		BOWL PROTECTION	CONDENSATION DRAIN			PRESSURE GAUGE		
			0 ÷ 10 bar	other		5 µm	40 µm		Manual	Semi-auto	Auto	Square integrated	G1/8 adaptor	
D	FR+L	0	G1/4"	■	○	—	■	○	—	■	○	—	■	○
		1	G3/8"	■	○	○	■	○	■	■	○	○	■	■
		2	G1/2"	■	○	○	■	○	■	■	○	○	■	■
C	F+R+L	0	G1/4"	■	○	—	■	○	—	■	○	—	■	○
		1	G3/8"	■	○	○	■	○	■	■	○	○	■	■
		2	G1/2"	■	○	○	■	○	■	■	○	○	■	■
B	FR	0	G1/4"	■	○	—	■	○	—	■	○	—	■	○
		1	G3/8"	■	○	○	■	○	■	■	○	○	■	■
		2	G1/2"	■	○	○	■	○	■	■	○	○	■	■
F	F	0	G1/4"	—	—	—	■	○	—	■	○	—	—	—
		1	G3/8"	—	—	—	■	○	■	■	○	○	—	—
		2	G1/2"	—	—	—	■	○	■	■	○	○	—	—
R	R	0	G1/4"	■	○	—	—	—	—	■	○	—	■	○
		1	G3/8"	■	○	○	—	—	■	■	○	○	■	■
		2	G1/2"	■	○	○	—	—	■	■	○	○	■	■
L	L	0	G1/4"	—	—	—	—	—	—	—	—	—	—	—
		1	G3/8"	—	—	—	—	—	■	—	—	—	—	—
		2	G1/2"	—	—	—	—	—	■	—	—	—	—	—

■ = standard

○ = upon request

— = not available

HZE

Air treatment units

New series available in 3 sizes

- HZE0 - G1/4" (40 mm)
- HZE1 - G3/8" (63 mm)
- HZE2 - G1/2" (80 mm)

Standard configurations

- Filter
- Regulator
- Lubricator
- Filter regulator (FR)
- Filter regulator + Lubricator (FR+L)
- Filter + Regulator + Lubricator (F+R+L)

Integrated square pressure gauge standard supplied (where foreseen)



TECHNICAL CHARACTERISTICS

Ambient temperature	5 ÷ 60 °C
Fluid	compressed air
Working pressure	0 ÷ 10 bar
Max pressure	12 bar
Size	0 - 1 - 2

CONSTRUCTIVE FEATURES

Body	tecnopolymer with metal threaded elements (size 0) die-cast aluminium (size 1 - 2)
Knob	tecnopolymer
Ring nut	tecnopolymer
Bowl	polycarbonate
Bowl guard	tecnopolymer (size 1-2)
Filter element	synthetic fibre
Seals	nitrile rubber
Springs	steel
Diaphragm	fabric reinforced rubber

CODIFICATION KEY

H	Z	E	0	B	0	8	G	M	
1	2	3	4	5	6				

1 Series	2 Size	3 Model
HZE	0 = small (G1/4) 1 = medium (G3/8) 2 = large (G1/2)	B = Filter regulator C = Filter+Regulator+Lubricator (F+R+L) D = Filter regulator+Lubricator (FR+L) F = Filter L = Lubricator R = Regulator

4 Port	5 Pressure gauge	6 Filtration
08G = G1/4 (size 0) 10G = G3/8 (size 1) 15G = G1/2 (size 2)	blank = port G1/8 (upon request only for size 0) M = integrated square pressure gauge (standard)	blank = 5 micron (standard) upon request = other filtration ratings

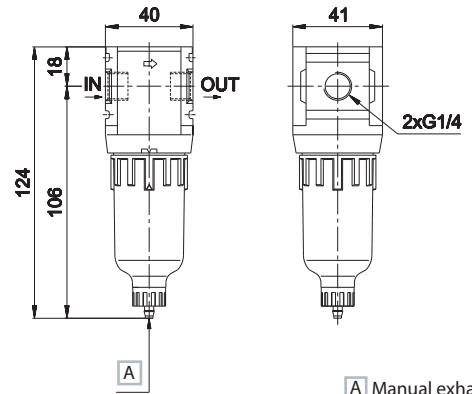
Size 0: G1/8 thread optional (code HZE7Z480)

Size 1 - 2: G1/8 square adaptor included for round pressure gauge mounting

Size	0	1	2
Part no.	HZE0F08G	HZE1F10G	HZE2F15G
Threaded port	G1/4	G3/8	G1/2
Filtration rating (µm)	5	5	5
Flow rate (NI/min) ^(A)	1100	3500	6500
Max inlet pressure (bar-MPa-psi)	12-1-145	12-1-145	12-1-145
Fluid	compressed air	compressed air	compressed air
Temperature (°C)	5 ÷ 60	5 ÷ 60	5 ÷ 60
Condensation drain capacity (cm ³)	12	45	80
Condensation drain	manual	manual	manual
Weight (Kg)	0,10	0,31	0,55
Mounting position	vertical	vertical	vertical

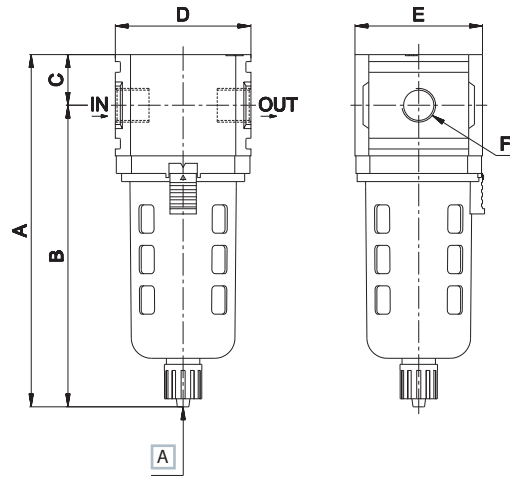
(A) = inlet pressure 6 bar, outlet pressure 5 bar - Δp 1 bar

HZE0F08G



A Manual exhaust

HZE1F10G - HZE2F15G



A Manual exhaust

size	A	B	C	D	E	F
1	180	157	23	63	63	G3/8
2	195	172	23	80	80	G1/2

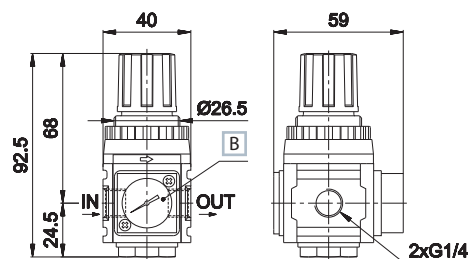
Size	0	1	2
Part no.	HZE0R08GM	HZE1R10GM	HZE2R15GM
Threaded port	G1/4	G3/8	G1/2
Flow (NI/min) ^(A)	1000	2100	4300
Max inlet pressure (bar-MPa-psi)	12-1-145	12-1-145	12-1-145
Pressure adjustment relieving (bar)	0,5 ÷ 8,5	0,5 ÷ 8,5	0,5 ÷ 8,5
Pressure gauge (standard supplied)	HZ9464G	HZ9464G	HZ9464G
Pressure gauge port	G1/8 ^(B)	G1/8 ^(C)	G1/8 ^(C)
Fluid	filtered air	filtered air	filtered air
Temperature (°C)	5 ÷ 60	5 ÷ 60	5 ÷ 60
Weight (Kg)	0,16	0,45	0,70
Mounting position	vertical/horizontal	vertical/horizontal	vertical/horizontal

(A) = inlet pressure 6 bar, outlet pressure 5 bar - Δp 1 bar

(B) = optional (replace HZ9464G gauge with G1/8 adaptor HZE7Z480 to be ordered separately)

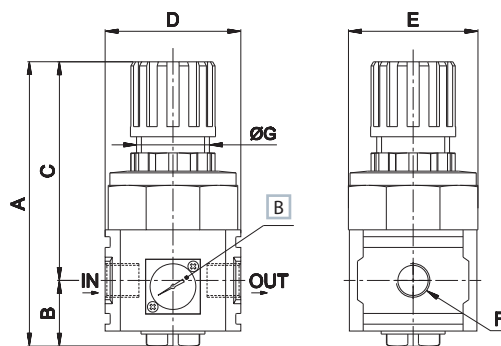
(C) = standard (replace HZ9464G gauge with G1/8 adaptor HZE7Z480 placed on the back side)

HZE0R08GM



B HZ9464G gauge standard supplied

HZE1R10GM - HZE2R15GM



B HZ9464G gauge standard supplied

size	A	B	C	D	E	F	G
1	136	32,5	103,5	63	63	G3/8	40
2	145	34,5	110,5	80	80	G1/2	47

> Lockable regulator size 1 - 2



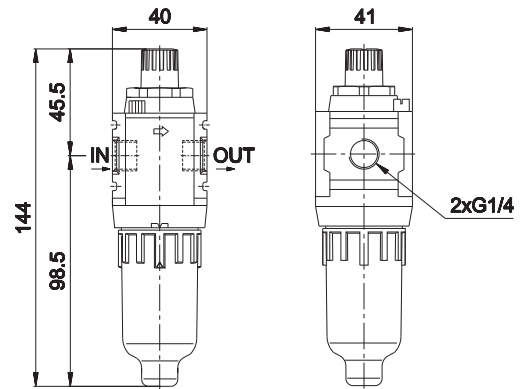
size	part no.
1	HZE1RL10GM
2	HZE2RL15GM

Lock not included

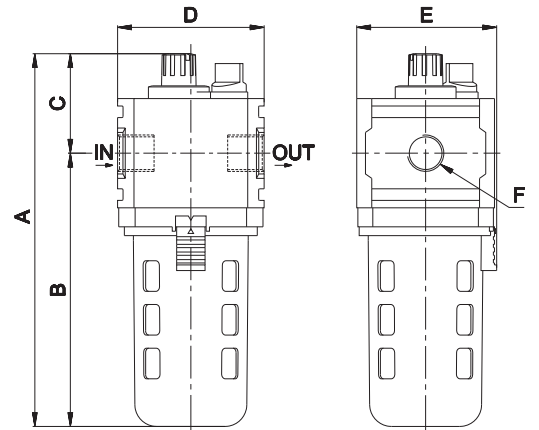
Size	0	1	2
Part no.	HZE0L08G	HZE1L10G	HZE2L15G
Threaded port	G1/4	G3/8	G1/2
Flow (NI/min) ^(A)	1400	4400	7000
Max inlet pressure (bar-MPa-psi)	12-1-145	12-1-145	12-1-145
Fluid	filtered air	filtered air	filtered air
Temperature (°C)	5 ÷ 60	5 ÷ 60	5 ÷ 60
Bowl capacity (cm ³)	20	85	170
Weight (Kg)	0,10	0,31	0,46
Mounting position	vertical	vertical	vertical
Recommended oil	ISO VG 32	ISO VG 32	ISO VG 32
Minimum working flow (l/min)	25	30	65

(A) = inlet pressure 6 bar, outlet pressure 5 bar - Δp 1 bar

HZE0L08G



HZE1L10G - HZE2L15G



size	A	B	C	D	E	F
1	177	130	47	63	63	G3/8
2	196	148	48	80	80	G1/2

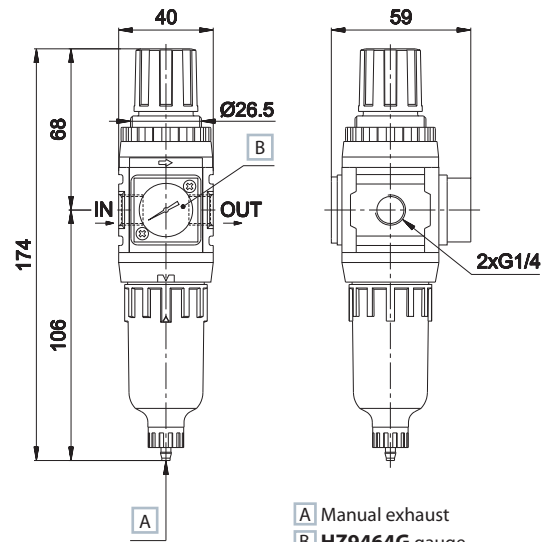
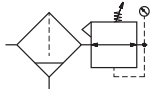
Size	0	1	2
Part no.	HZE0B08GM	HZE1B10GM	HZE2B15GM
Threaded port	G1/4	G3/8	G1/2
Filtration rating (µm)	5	5	5
Flow NI/min (A)	1000	2300	4500
Max inlet pressure (bar-MPa-psi)	12-1-145	12-1-145	12-1-145
Pressure adjustment by relieving (bar)	0,5 ÷ 8,5	0,5 ÷ 8,5	0,5 ÷ 8,5
Pressure gauge (standard supplied)	HZ9464G	HZ9464G	HZ9464G
Pressure gauge port	G1/8(B)	G1/8(C)	G1/8(C)
Fluid	compressed air	compressed air	compressed air
Temperature (°C)	5 ÷ 60	5 ÷ 60	5 ÷ 60
Condensation drain capacity (cm ³)	12	45	80
Condensation drain	manual	manual	manual
Weight (Kg)	0,21	0,65	1,00
Mounting position	vertical	vertical	vertical

(A) = inlet pressure 6 bar, outlet pressure 5 bar - Δp 1 bar

(B) = optional (replace HZ9464G gauge with G1/8 adaptor HZE7Z480 to be ordered separately)

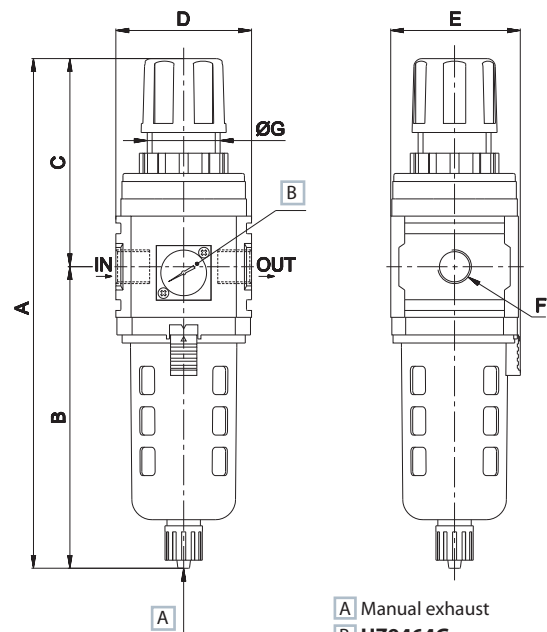
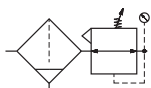
(C) = standard (replace HZ9464G gauge with G1/8 adaptor HZE7Z480 placed on the back side)

HZE0B08GM



A Manual exhaust
B HZ9464G gauge standard supplied

HZE1B10GM - HZE2B15GM



A Manual exhaust
B HZ9464G gauge standard supplied

size	A	B	C	D	E	F	G
1	259	156	103	63	63	G3/8	40
2	280	170	110	80	80	G1/2	47

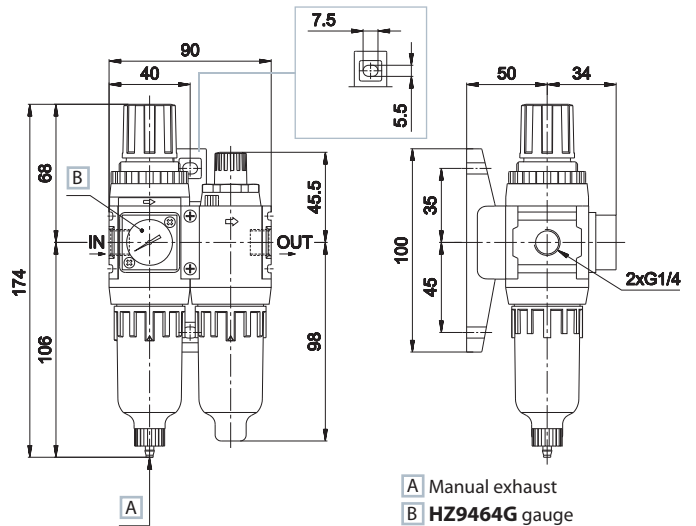
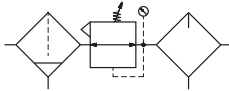
Size	0	1	2
Part no.	HZE0D08GM	HZE1D10GM	HZE2D15GM
Threaded port	G1/4	G3/8	G1/2
Filtration rating (µm)	5	5	5
Flow NI/min ^(A)	900	1200	2000
Max inlet pressure (bar-MPa-psi)	12-1-145	12-1-145	12-1-145
Pressure adjustment by relieving (bar)	0,5 ÷ 8,5	0,5 ÷ 8,5	0,5 ÷ 8,5
Pressure gauge (standard supplied)	HZ9464G	HZ9464G	HZ9464G
Pressure gauge port	G1/8 ^(B)	G1/8 ^(C)	G1/8 ^(C)
Fluid	compressed air	compressed air	compressed air
Temperature (°C)	5 ÷ 60	5 ÷ 60	5 ÷ 60
Condensation drain capacity (cm ³)	12	45	80
Condensation drain	manual	manual	manual
Weight (Kg)	0,33	1,05	1,55
Mounting position	vertical	vertical	vertical
Recommended oil	ISO VG 32	ISO VG 32	ISO VG 32
Minimum working flow (l/min)	25	30	65

(A) = inlet pressure 6 bar, outlet pressure 5 bar - Δp 1 bar

(B) = optional (replace HZ9464G gauge with G1/8 adaptor HZE7Z480 to be ordered separately)

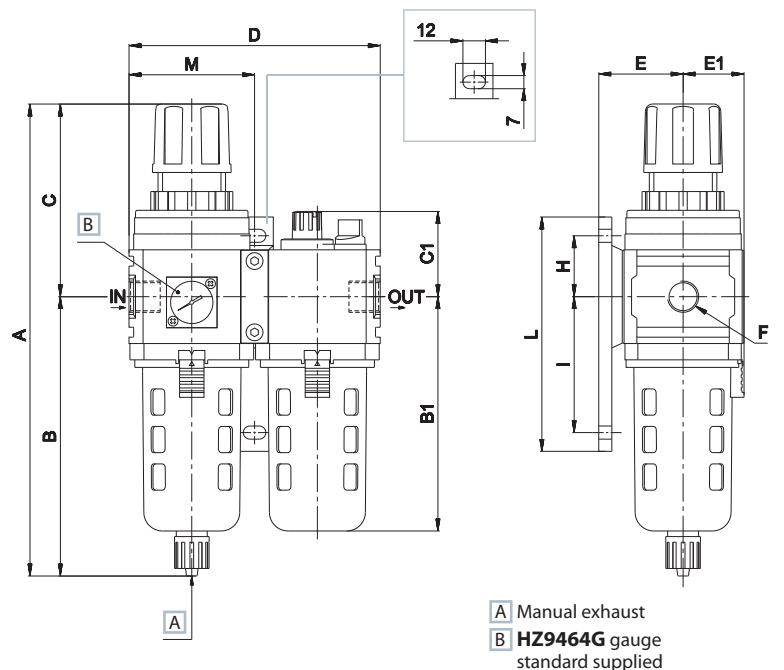
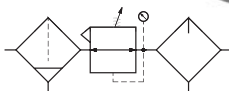
(C) = standard (replace HZ9464G gauge with G1/8 adaptor HZE7Z480 placed on the back side)

HZE0D08GM



- A** Manual exhaust
- B** HZ9464G gauge standard supplied

HZE1D10GM - HZE2D15GM



- A** Manual exhaust
- B** HZ9464G gauge standard supplied

size	A	B	B1	C	C1	D	E	E1	F	H	I	L	M
1	259	156	130	103	47	126	45	31,5	G3/8	45	60	125	63
2	280	170	148	110	48	160	55	40	G1/2	45	60	125	80

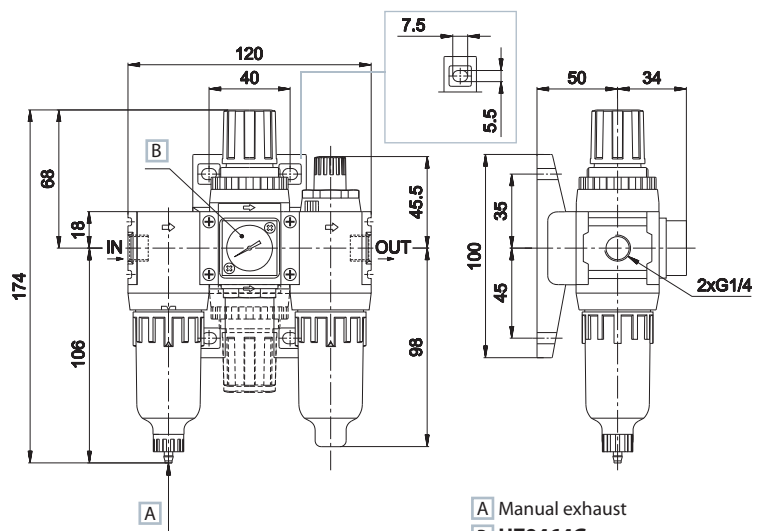
Size	0	1	2
Part no.	HZE0C08GM	HZE1C10GM	HZE2C15GM
Threaded port	G1/4	G3/8	G1/2
Filtration rating (µm)	5	5	5
Flow l/min (A)	900	1200	2000
Max inlet pressure (bar-MPa-psi)	10-1-145	10-1-145	10-1-145
Pressure adjustment by relieving (bar)	0,5 ÷ 8,5	0,5 ÷ 8,5	0,5 ÷ 8,5
Pressure gauge (standard supplied)	HZ9464G	HZ9464G	HZ9464G
Pressure gauge port	G1/8 (B)	G1/8 (C)	G1/8 (C)
Fluid	compressed air	compressed air	compressed air
Temperature (°C)	5 ÷ 60	5 ÷ 60	5 ÷ 60
Condensation drain capacity (cm³)	12	45	80
Condensation drain	manual	manual	manual
Weight (Kg)	0,40	1,25	1,90
Mounting position	vertical	vertical	vertical
Recommended oil	ISO VG 32	ISO VG 32	ISO VG 32
Minimum working flow (l/min)	25	30	65

(A) = inlet pressure 6 bar, outlet pressure 5 bar - Δp 1 bar

(B) = optional (replace HZ9464G gauge with G1/8 adaptor HZE7Z480 to be ordered separately)

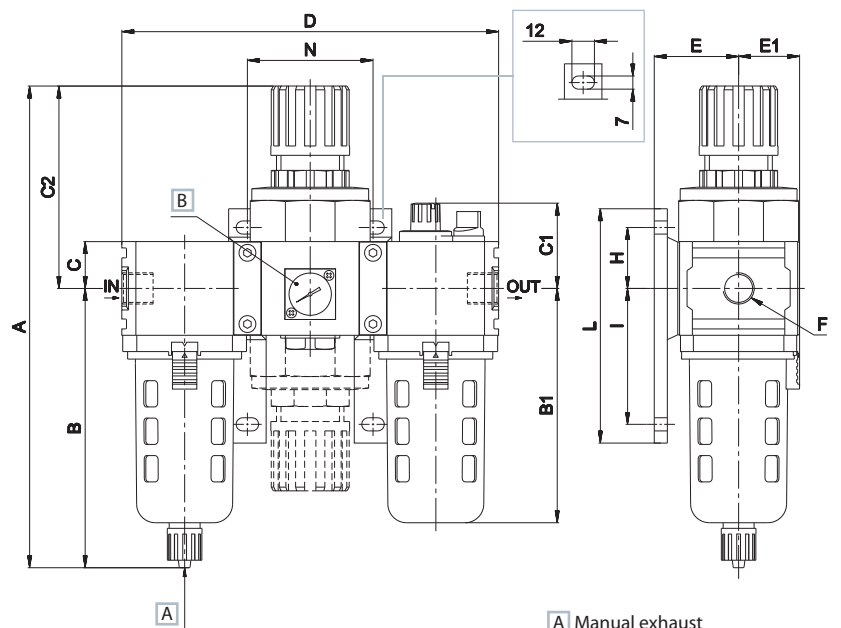
(C) = standard (replace HZ9464G gauge with G1/8 adaptor HZE7Z480 placed on the back side)

HZE0C08GM



A Manual exhaust
 B HZ9464G gauge standard supplied

HZE1C10GM - HZE2C15GM

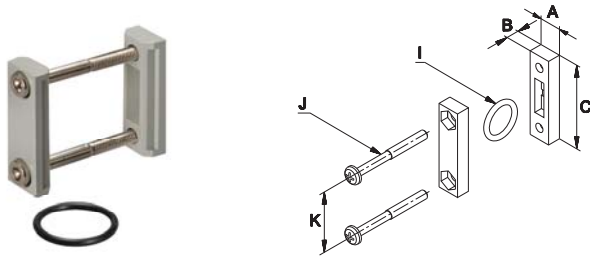


A Manual exhaust
 B HZ9464G gauge standard supplied

size	A	B	B1	C	C1	C2	D	E	E1	F	H	I	L	N
1	260,5	157	130	23	47	103,5	190	45	31,5	G3/8	45	60	125	63
2	282,5	172	148	23	48	110,5	240	55	40	G1/2	45	60	125	80

> Fixing elements

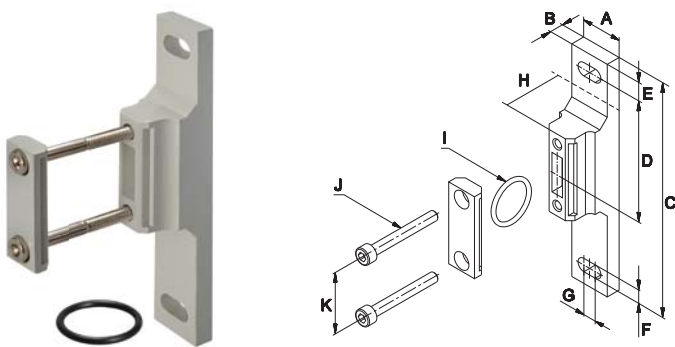
Assembly kit with central coupling



size	A	B	C	ØI	J	K	Part no.
0	9,5	5,5	36	18	M3x37	26	HZE0Z200
1	15	7	44	25,7	M5x45	32	HZE1Z200
2	15	7	44	25,7	M5x45	32	HZE2Z200



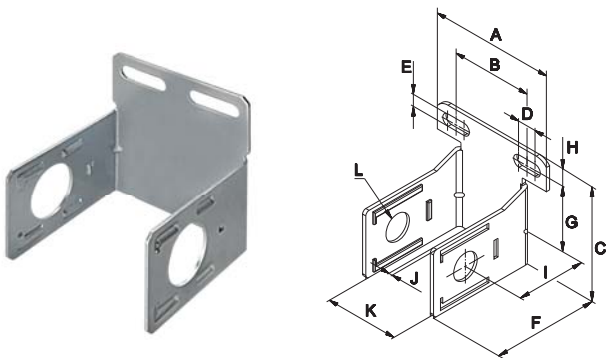
T-bracket with central coupling



size	A	B	C	D	E	F	G	H	ØI	J	K	Part no.
0	16	7	105	35,5	10	5,5	4	25	18	M3x37	26	HZE0Z210
1	22	7	125	45	10	7	7	27	25,7	M5x45	32	HZE1Z210
2	22,4	7	125	45	10	7	7	27	25,7	M5x45	32	HZE2Z210



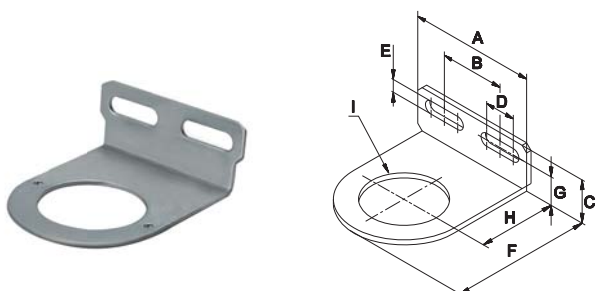
C- bracket



size	A	B	C	D	E	F	G	H	I	J	K	ØL	Part no.
0	68	44	61,5	10	6,5	60	35	8,5	40	2	40	14	HZE0Z300
1	67	34,5	76	14	7	69	45	9	45	2,3	63	25	HZE1Z300
2	84	55	93,5	14	9	102	50	11	65	2,3	80	25	HZE2Z300



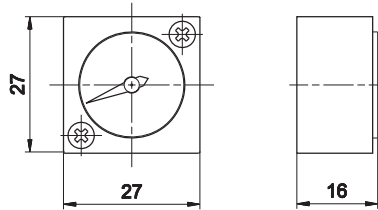
Regulator L-bracket



size	A	B	C	D	E	F	G	H	ØI	Part no.
0	68	44	24,5	10	6,5	59	16	40	26,5	HZE0Z310
1	67	34,5	26	16,5	7	76	18	45	40	HZE1Z310
2	84	55	26	16,5	7	94	18	45	47	HZE2Z310



HZ9464G



Square pressure gauge standard supplied
size 0 - 1 - 2 (0 ÷ 12 bar)
Bolt tightening torque: Max 0,6 Nm

HZE7Z480

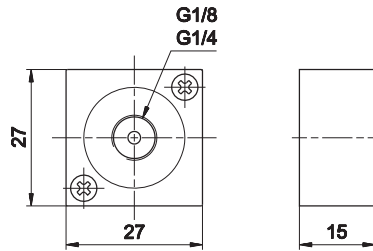
HZE7Z490



G1/8

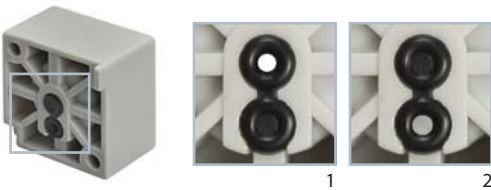


G1/4



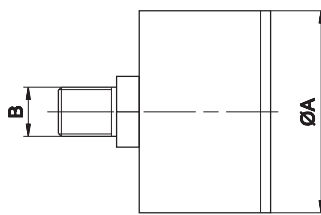
Threaded square adaptor for round pressure gauge
Bolt tightening torque: Max 0,6 Nm

> Seal detail



While replacing the square gauge with the threaded square adaptor, be sure that the seal is rotated like in photo no 1.

HZ9P...



Part no.	Ø A	Scale		Port - B
		bar	MPa	
HZ9P401018	40	0 - 10	0 - 1	G1/8C
HZ9P501014	50	0 - 10	0 - 1	G1/4C
HZ9P631014	63	0 - 10	0 - 1	G1/4C

Body: tecnopolymer
Dial: pressure inserted acrylic
Accuracy: EN 837 class 1,6 - 2,5. ASME B40.1 Grade B
Protection: IP 43

HZE7Z400

Filter elements



Automatic drain size 1 - 2
To replace, unscrew the ring nut completely to free the drain lip and push up to remove the units. Replace and re-lock into place

Size 0	Size 1	Size 2	
HZE0Z660	HZE1Z660	HZE2Z660	5 µm
HZE0Z664	HZE1Z664	HZE2Z664	40 µm