

LOGIC ELEMENTS



- └ Sub-Base Mounted Logic Elements
- └ Interchangeable with other manufacturers
- └ High Flow

Index >>

LE SERIES	General Discription, Technical Data, Material Specifictation	4
	Sub-Base Logic Elements 'OR' Gate, 'AND' Gate, 'NOT' Gate, 'YES' Gate	5
	Sub-Base Logic Elements 'INHIBITION' Gate,	6
	Sub-Base Logic Elements 'SINGLE' Sub-Base, 'SPECIAL' Sub-Bases	6

LE Series

SUB-BASE LOGIC ELEMENTS



GENERAL DESCRIPTION

UMC Logic Elements are ideal for complex pneumatic circuitry. All elements are interchangeable with Crouzet and can be fitted to individual sub bases or used in-conjunction with UNIBLOCK for custom made control systems on a modular block. UMC Logic Elements are capable of working in hazardous areas.

TECHNICAL DATA

Nominal orifice	2.5mm
Nominal flow rate	100Nl/min (at 6 bar)
Temperature range	-10 to 60oC
Working pressure	2 to 10 bar
Media	Compressed air (filtered 50 micron)

MATERIAL SPECIFICATION

Body	Aluminium
Seals	NBR
Springs	Stainless Steel
Internal parts	Brass
Mounting Screws	Chrome plated steel (M4 Thread)

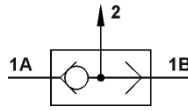
SUB-BASE LOGIC ELEMENTS

LE Series

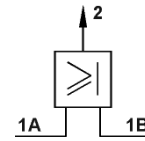
'OR'
Gate



Pneumatic
Circuit Symbol



Logic
Circuit Symbol



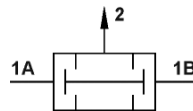
Part
Number

LE-8296

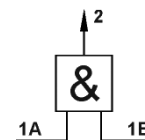
'AND'
Gate



Pneumatic
Circuit Symbol



Logic
Circuit Symbol



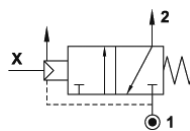
Part
Number

LE-8297

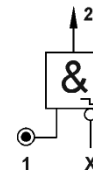
'NOT'
Gate



Pneumatic
Circuit Symbol



Logic
Circuit Symbol



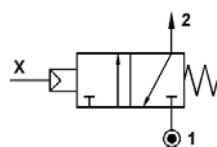
Part
Number

LE-8298

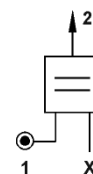
'YES'
Gate



Pneumatic
Circuit Symbol



Logic
Circuit Symbol



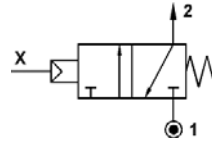
Part
Number

LE-8299

'INHIBITION' Gate



Pneumatic
Circuit Symbol



Part
Number

LE-8300

SINGLE SUB-BASE



UMC Sub-Bases are common to all Logic Element modules and are inter-changeable with other makes of Logic Element, including Compair Maxam and Telemechanique.

Part
Number

LE-0151

SPECIAL SUB-BASES



UMC manufacture special Sub-Bases to suit the needs of our clients. Sub-Bases can include any number of Logic Elements plus other sub base mounted components including Pressure Regulators, Pressure Switches, Gauges, Sensors and In-built Push-In Fittings and Non-Return Valves.

UNIVER Manufacturing Company LTD.

UK HEAD OFFICE

Station Road, Bradford,

West Yorkshire BD1 4SF

Tel: +44 (0) 1274 725777

Fax: +44 (0) 1274 725111

E-mail: enquiries@univer.co.uk

www.univer.co.uk



UNIVER MANUFACTURING COMPANY

UNIVER Manufacturing Company LTD.

UK Head Office

Station Road
Bradford
West Yorkshire BD1 4SF
Tel: +44 (0) 1274 725777
Fax: +44 (0) 1274 725111
E-mail: enquiries@univer.co.uk

LEADERS IN INDUSTRIAL AUTOMATION

www.univer.co.uk

